



GAT MONTHLY MEMBERSHIP PROGRESS REPORT

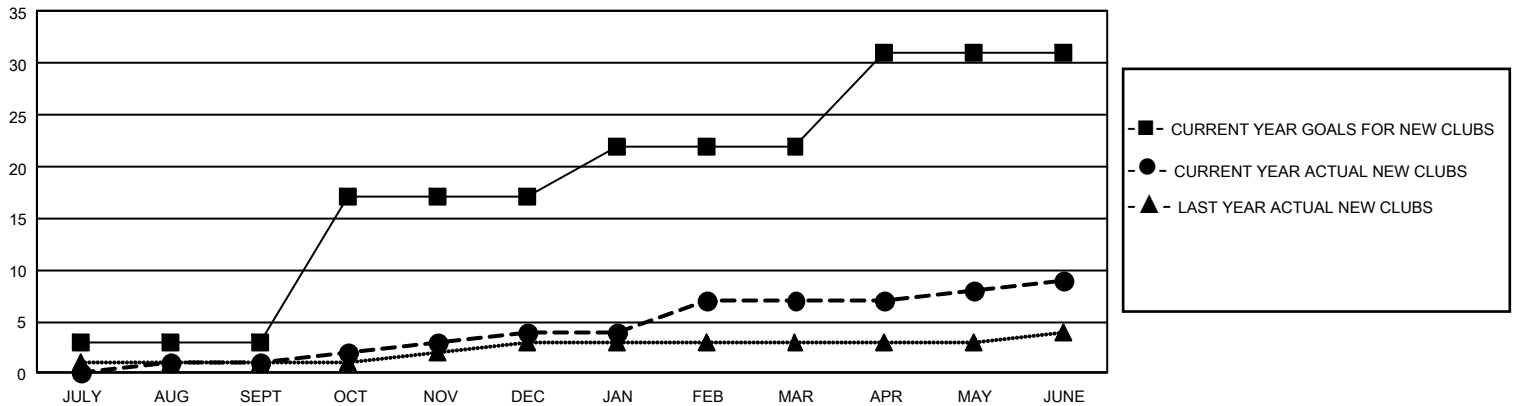
Results as of: 6/30/2025

GMT Constitutional Area 1, Group E

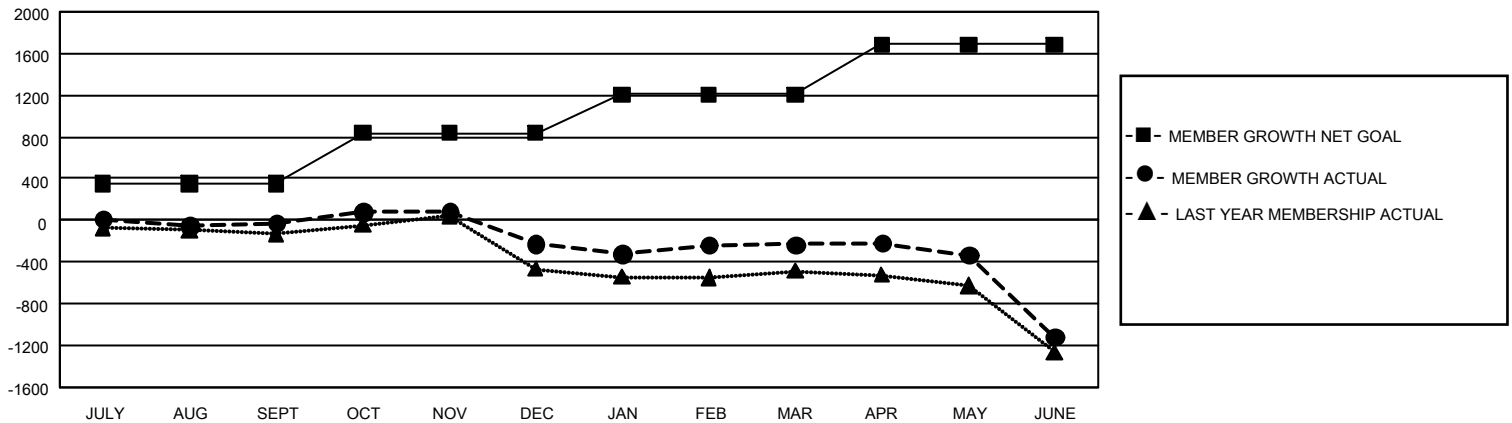
REPORT DOES NOT INCLUDE CLUBS IN UNDISTRICTED AREAS.

| Clubs | | | | Members | | | |
|-----------------------|---------------|-----------|---------------|-----------------------|------------------------|----------------------|--|
| RESULTS FOR 2024-2025 | | | | RESULTS FOR 2024-2025 | | | |
| QUARTER | NEW CLUB GOAL | NEW CLUBS | DROPPED CLUBS | QUARTER | MEMBER GROWTH NET GOAL | MEMBER GROWTH ACTUAL | DROPPED MEMBERS ACTUAL (including transfers) |
| JULY/AUG/SEPT | 9 | 1 | 3 | JULY/AUG/SEPT | 354 | 833 | 753 |
| OCT/NOV/DEC | 42 | 3 | 8 | OCT/NOV/DEC | 481 | 847 | 981 |
| JAN/FEB/MAR | 15 | 3 | 4 | JAN/FEB/MAR | 372 | 942 | 812 |
| APR/MAY/JUNE | 27 | 2 | 17 | APR/MAY/JUNE | 479 | 1,014 | 1,739 |

GOALS AND ACTUAL NEW CLUBS CUMULATIVE



GOALS AND ACTUAL MEMBERS CUMULATIVE



DROPPED CLUBS: 32

734 CLUBS OF 1,285 ADDED 1 OR MORE NEW MEMBERS

GENDER DISTRIBUTION

| | |
|----------------------|-----------------|
| MALE | 21,940 (66.53%) |
| FEMALE | 11,003 (33.36%) |
| NON BINARY | 1 (0.00%) |
| PREFER NOT TO ANSWER | 34 (0.10%) |

DROPPED MEMBERS

| | |
|----------------|--------------|
| DECEASED | 596 |
| CLUB CANCELLED | 192 |
| OTHER | 3,477 |
| TOTAL | 4,265 |

[CLICK HERE FOR CUMULATIVE MEMBERSHIP DATA](#)

TOTAL FAMILY UNIT MEMBERS 6,388

FAMILY MEMBERS PAYING HALF DUES 3,289